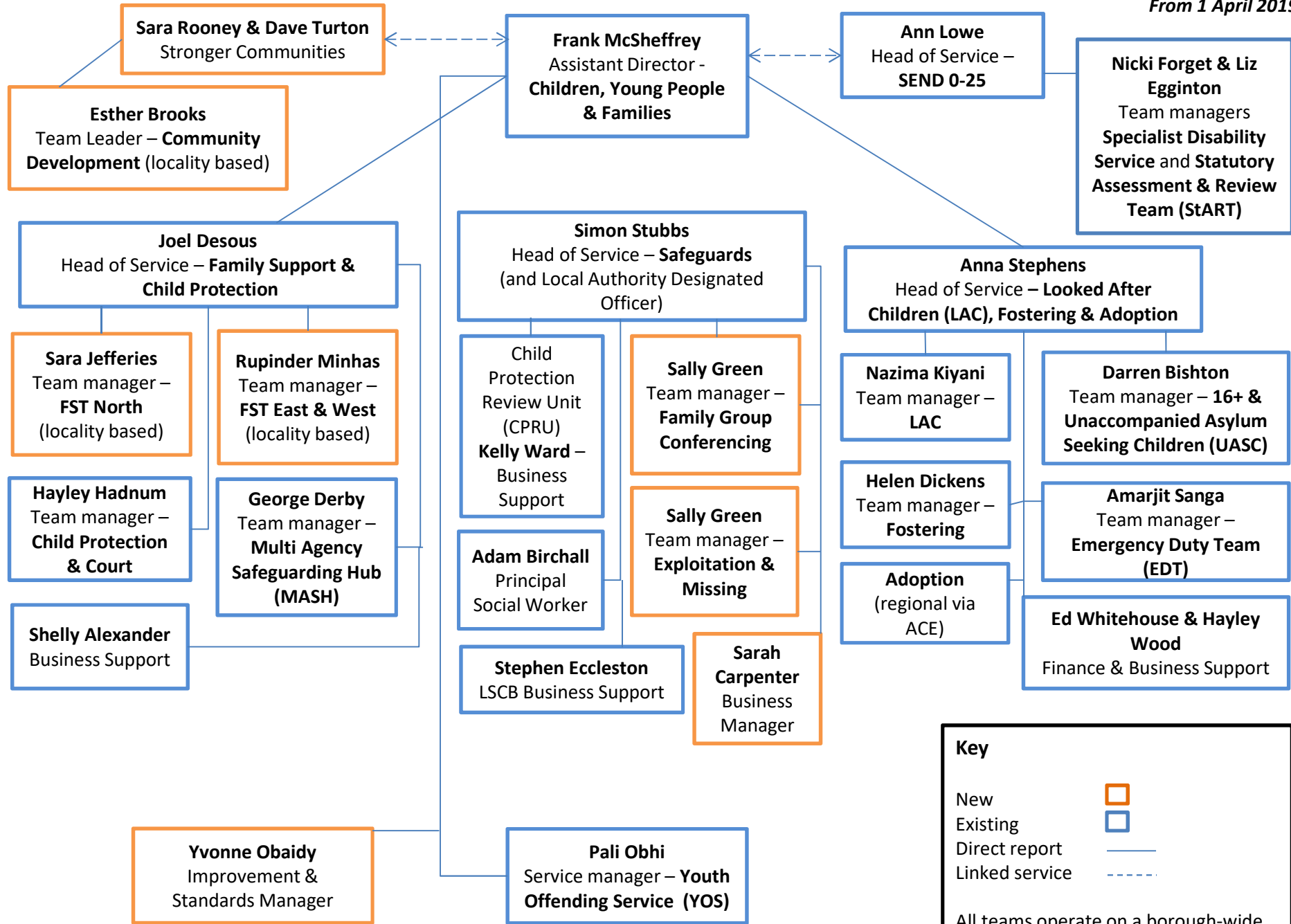


From 1 April 2019



Key

- New
- Existing
- Direct report
- Linked service

All teams operate on a borough-wide basis, apart from those identified.

Contact details

Frank McSheffrey: fmcshreffrey@solihull.gov.uk 0121 704 8365

Joel Desous: joel.desous@solihull.gov.uk 0121 788 4358
Sara Jefferies: sjefferies@solihull.gov.uk 0121 788 4329
Rupinder Minhas: rminhas@solihull.gov.uk 0121 788 4235
Hayley Hadnum: hhadnum@solihull.gov.uk 0121 788 4355
George Derby: gderby@solihull.gov.uk 0121 788 4371
Amarjit Sanga: amsanga@solihull.gov.uk 0121 605 6060
Shelly Alexander: salexander@solihull.gov.uk 0121 788 4426

Simon Stubbs: sstubbs@solihull.gov.uk 0121 788 4227
Sally Green: sgreen@solihull.gov.uk 0121 709 7011
Kelly Ward: kward@solihull.gov.uk 0121 788 4310
Adam Birchall: abirchall@solihull.gov.uk 0121 788 4497
Stephen Eccleston: stephen.eccleston@solihull.gov.uk
0121 788 4325

Anna Stephens: astephens@solihull.gov.uk 0121 788 4307
Nazima Kiyani: nazima.kiyani@solihull.gov.uk 0121 788 4210
Darren Bishton: dbishton@solihull.gov.uk 0121 788 4283
Helen Dickens: helen.dickens@solihull.gov.uk 0121 788 4211
Ed Whitehouse: edward.whitehouse@solihull.gov.uk
0121 788 4200
Hayley Wood: hawood@solihull.gov.uk 0121 788 4211

Yvonne Obaidy: yobaidy@solihull.gov.uk 0121 704 8074

Pali Obhi: pali.obhi@solihull.gov.uk 0121 709 7147

Sara Rooney: srooney@solihull.gov.uk 0121 704 6713
Dave Turton: dturton@solihull.gov.uk 0121 704 8339
Esther Brooks: ebrooks@solihull.gov.uk 0121 704 7471

Ann Lowe: ann.lowe@solihull.gov.uk 0121 704 6690
Nicki Forget: nicki.forget@solihull.gov.uk 0121 704 6690
Liz Egginton: elizabeth.egginton@solihull.gov.uk
0121 779 1730
MASH: mash@solihull.gov.uk 0121 788 4300

What's new

Family Support Team (FST)

The role of the new FSTs is to respond to referrals from the MASH that require a level 3 or level 4 response to children in need. The teams will comprise social workers and family support workers who will work closely to carry out focused and timely assessments. They will utilise their specific skill sets to create a robust plan of intervention that is bespoke to the family's needs. The FSTs are locality based – North, East & West – however due to the nature of the work there will be a need for staff to be flexible across areas.

Multi Agency Safeguarding Hub (MASH)

MASH will continue to operate as the first point of contact for children's social work, but will also now act as a level 3 and level 4 referral point. These are cases which require a greater level of support. The team will be responsible for providing direct advice and support to referrers as well as linking them in with community initiatives which may be suitable.

Exploitation & Missing

This team will take over from the existing Child Sexual Exploitation Team and expand their remit to cover the wider exploitation agenda. This includes modern day slavery, criminal exploitation, human trafficking, gang related exploitation and county lines. The team will also quality assure responses to young people reported as missing from home or care.

Family Group Conferencing (FGC)

FGC will provide a dedicated family network meeting service to bring families together for children suffering or likely to suffer harm from within their own families. They will help co-ordinate and facilitate a family generated response to the child or young person's needs to help prevent further intervention from children's services.

16+ & Unaccompanied Asylum Seeking Children (UASC)

This team will now incorporate OVOS – Solihull's children in care council – they will direct and coordinate their work and support care leavers.

Community Development

This team will be locality based and support children, young people and families within their communities, who do not require specialist children's services support. This may be through a community based service or one offered by a community group.